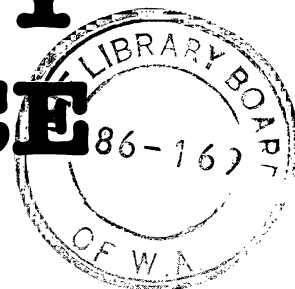


OPENING CEREMONY WITH A DIFFERENCE

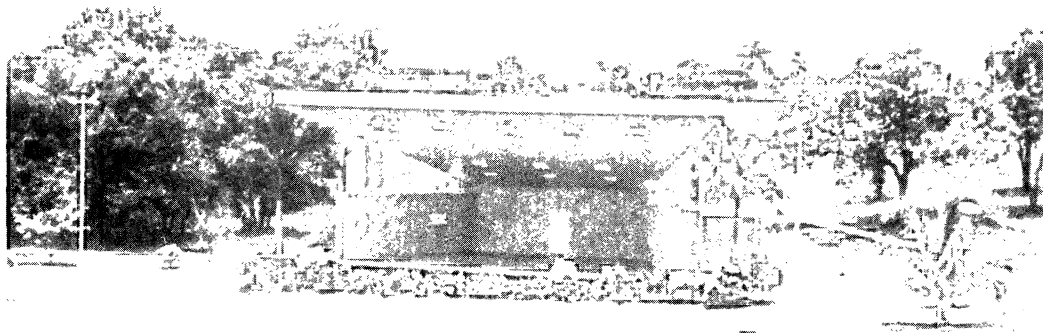


The opening ceremony of the 1986 LAA Biennial Conference will be something to remember. Set in the tropical surrounds of Darwin's amphitheatre in the heart of the Botanical Gardens, the opening ceremony will take advantage of Darwin's superb dry season weather.

Wear very casual clothes as most seating will be on grass. The evening temperature can drop to 17°C and while this may not seem cold compared to southern winter temperatures, it is much cooler than the daytime temperature in Darwin, so bring a wrap.

The official opening will be between 6 and 7pm, followed by dinner and entertainment. The final event of the evening will be a corroboree staged by the Elcho Island Dance Troupe so bring your camera and flash. The dances will be performed twice — once slowly with interpretations given and then at the normal pace.

Dinner will feature specialties of the Northern Territory — barramundi and buffalo on a barbecue. Those who attended a Taste of



**See page 6 for news on
Darwin Conference Speakers**

TOWNSVILLE IN 1987

The LAA's Cataloguers' Section has a tradition of holding its biennial national conferences in unusual and exotic locations — such as Medlow Bath in 1976, Tanunda in 1978 and Canberra in 1985.

In July 1987 the conference will be held in Townsville, so that southern visitors can enjoy the winter sun, see the local sights, visit the tourist resorts, and learn that cataloguing does not stop at the Brisbane River.

Townsville is a modern tropical city of 100,000 people. It accommodates Australia's only tropical university and the headquarters of the Australian Institute of Marine Sciences and the Great Barrier Reef Marine Park Authority.

Townsville has the best winter climate in Australia, as thousands of visitors from the southern states discover each year. In July the maximum temperature scarcely varies from 25 degrees with clear blue skies and nights which as might be envied in paradise. For people with time and money to spend before and after the conference, Townsville provides ready access to the Great Barrier Reef, a range of tropical resort islands (including Magnetic, Orpheus, Hinchinbrook and Dunk), lush tropical rainforests, historic gold mining

the Territory at the Brisbane conference will remember these delights.

Above all, don't forget to indicate on your registration form if you are attending the Opening Ceremony. The price is included in the registration fee, so come along, meet your friends and get the Conference off to a good start.

Library Tours

Remember to include your requirements for library tours when completing your registration form. The Special Libraries Tour includes Mines and Energy, Community Development and Primary Production. School Libraries visited are Sanderson, Gray and Taminmin, while public libraries tour includes Casuarina, Library Services and Taminmin. The cost for each is \$15 per person. If you want to visit libraries

towns and most other things likely to take people's fancy (snowfields excepted).

The general theme of the conference will be 'A return to basics' involving a new look at the basic tools and techniques of cataloguing — AACR, LCSH and the classification schemes — which remain fundamental in spite of technological advances.

Planning has now commenced. Mark your diary now and if you have any comments, suggestions or thoughts on topics and speakers (particularly potential overseas speakers), contact the convenor of the North Queensland Regional Group's Planning Committee, John McKinlay, at James Cook University Library (077) 81 4472.

John McKinlay

further afield, why not consider the tour to Bathurst Island visiting Pularumpi school. Cost here is \$115 which includes the flight to and from Bathurst Island.

Extra Social Activities

Friends of Kuring-gai CAE are gathering by the pool at the Marrakai Apartments, 92 Smith Street for wine and cheese. This will be on Tuesday evening from 5pm to 7pm at no charge.

University and College Librarians section are having an informal barbecue at the Darwin Sailing Club overlooking picturesque Fannie Bay. The Darwin Ceilidh Band will provide bush music. Cost is \$13 per person.

Status of Women in Librarianship Special Interest Group are holding their breakfast and AGM at the poolside, Travelodge, from 7 to 8.45am. The cost is \$6.45 per person.

Childcare Facilities

Selected hotels will be able to provide evening child care if they are given sufficient notice.

Daily childcare is available. For further information, check at the Information desk in the Performing Arts Centre during the Conference.

Transport

Buses will be available at Darwin airport to meet incoming delegates between Thursday 26 June and Sunday 29 June. Transport will be free of charge to your hotel. Rental car facilities are also available at Darwin airport.

REMEMBER TO REGISTER!

Bronwyn Ash
Publicity and Public Relations