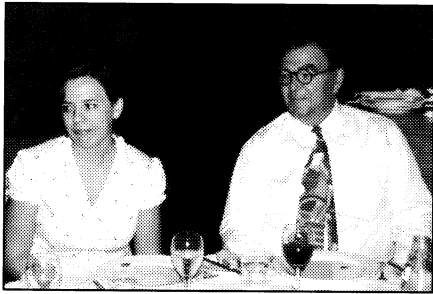
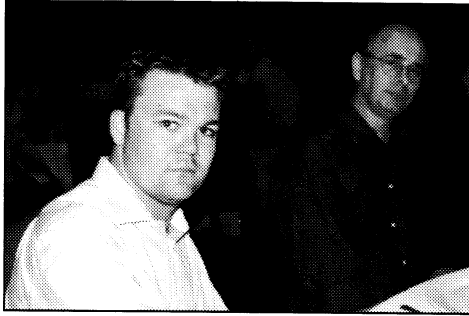


## photo album



The 2002 Kriewaldt Address drew a crowd the first occasion the function was held as a lunch.

Above left: Nickolai Christrup (left) and Steve Southwood QC attended  
Above right: (from left) Ally Loftus, Susie Slade and Lyn Bennett were all smiles at the lunch.

Left: Justice Angel (right) is a keen supporter of the Kriewaldt Address. Seated to his right, Amy Williamson.  
Right: Chris Osborne (left) and Mary-Lynn Griffiths.



## Seminars on tax

The Law Society was the host and "sponsor" of a series of taxation seminars conducted by the Australian Taxation Office in Alice Springs and Darwin.

The Society also opened the workshops to local accountants and all three were well attended (left: one of the Darwin workshops).

ATO presenter Mark Savatovic kept the information flow lively and informative.

The Law Society is planning to hold more tax seminars early next year.

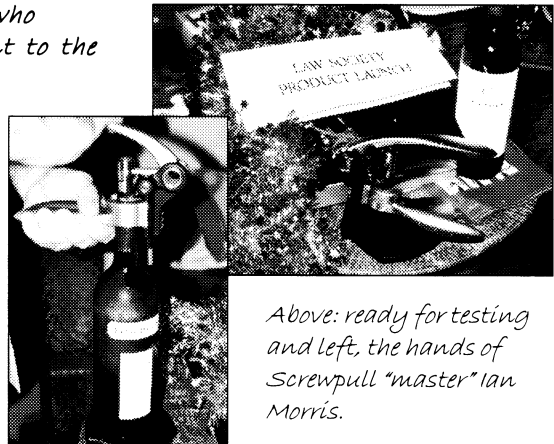
## The Screwpull product testing

The irony was not lost on Law Society NT Councillors who gathered to test the Screwpull Elegance II corkscrew sent to the Society for, well, product testing. Say Screwpull fast and you'll identify the irony.

As to the product itself, the Society's ever resourceful President Ian Morris showed himself to be a dab hand at using the unusual looking device. Councillor Markus Spazzapan also slickly whipped out a cork with the Screwpull.

However, there were some who wouldn't try and at least one who did but couldn't use it (even with the instructions).

The lowdown on the Screwpull? It's sturdy, good to use when you know how, an interesting conversation starter and the sort of executive "toy" that would go down well this Christmas for those who would like something different.



Above: ready for testing and left, the hands of Screwpull "master" Ian Morris.