

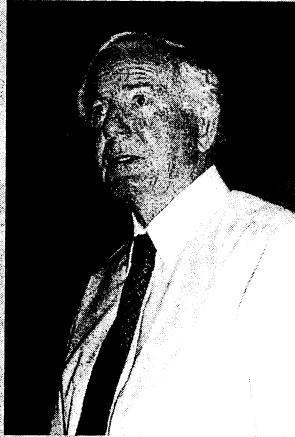
John Toohey Chambers recently launched its barristers' chambers on the Internet, with its namesake retired High Court judge and Aboriginal Land Commissioner in the NT, John Toohey, as guest speaker.

Ninety people gathered at Pee Wee's on the Point for a preview of the homepage and to meet some of the group of 14 barristers who form John Toohey Chambers.

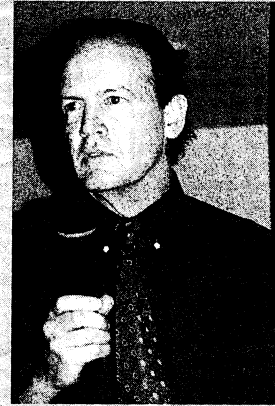
Barristers from around Australia join Darwin-based lawyers Patrick McIntyre and Michael O'Donnell in forming the first national barristers chambers. John Toohey Chambers draws together barristers with a wide range of experience, all of whom have extensive experience in the area of indigenous rights and other civil litigation.

The website is intended to provide a facility for national exchange in these areas and will provide a forum for educational and information networking.

It will provide maps disclosing native title holders and a youth page to foster direct access between indigenous and non indigenous students and communities. It will offer an expanding pictorial library and rel-



John Toohey, NT Aboriginal Land Commissioner, was guest speaker at the launch.



Ian Gray, former Territory Chief Magistrate, is now based at the John Toohey Chambers branch in Melbourne.

evant publications that are otherwise not readily available to the public.

The members of John Toohey Chambers also have in common an appreciation of and experience in developing processes for multi-party and cross-cultural negotiation and mediation of disputes. Many are accredited mediators and lecture in or provide workshop training in negotiation and mediation skills.

List of Barristers

Darwin

Pat McIntyre
Michael O'Donnell

Sydney

John Basten QC

Brisbane

Greg Koppenol
Graham Hiley QC

Melbourne

Ron Castan AM QC
Bryan Keon-Cohen QC
Ian Gray
Ross Howie
David Parsons

Cairns

Jeremy Darvall

Canberra

Robert Blowes

Perth

Greg McIntyre
Ian Viner AO QC



From back left, Jeremy Darvall, Cairns Branch, John Toohey, Greg McIntyre, Perth Branch, Michael O'Donnell, Darwin Branch, Ian Gray, Melbourne Branch, Bryan Keon-Cohen QC, Melbourne Branch and Pat McIntyre, Darwin.